



## How to find ISF Watchkeeper 3 (Network Version) serial number

### Notify ISF of the "Serial Number"

1. On the computer where Watchkeeper Server is installed, locate the Watchkeeper System Tray Applet (bottom right of the screen):

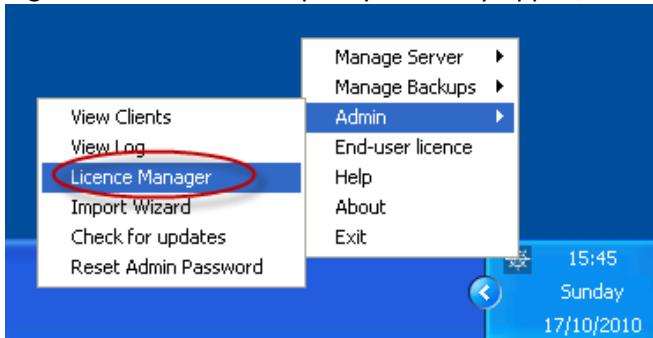


(If the icon does not appear as above, then please go to the next section)

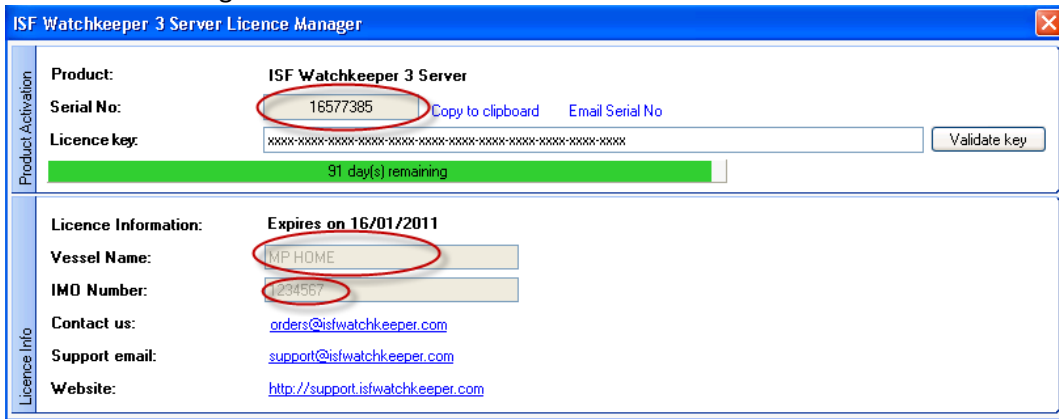
2. If the Applet icon is not shown as above, then click START then PROGRAMS then WATCHKEEPER 3 SERVER then WATCHKEEPER 3 SERVER



3. Right-click the Watchkeeper System Tray Applet, select ADMIN then LICENCE MANAGER



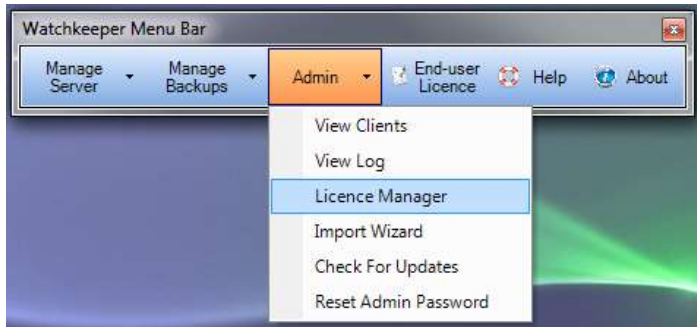
4. The License Manager will load:



5. Notify us by email of the information below. Please send the information to [orders@isfwatchkeeper.com](mailto:orders@isfwatchkeeper.com)
  - a. State product version: WK3 Server or WK3 (Single User)?
  - b. Your unique installation Serial Number (as shown above)
  - c. Your vessel name
  - d. Vessel IMO number
6. If you have email enabled on the computer, you can click the EMAIL SERIAL NO button to pre-populate this information

If the “System Tray” watchkeeper icon does not appear as in step 1 above, then please try the following:

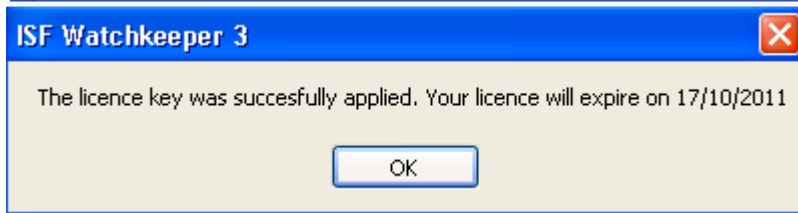
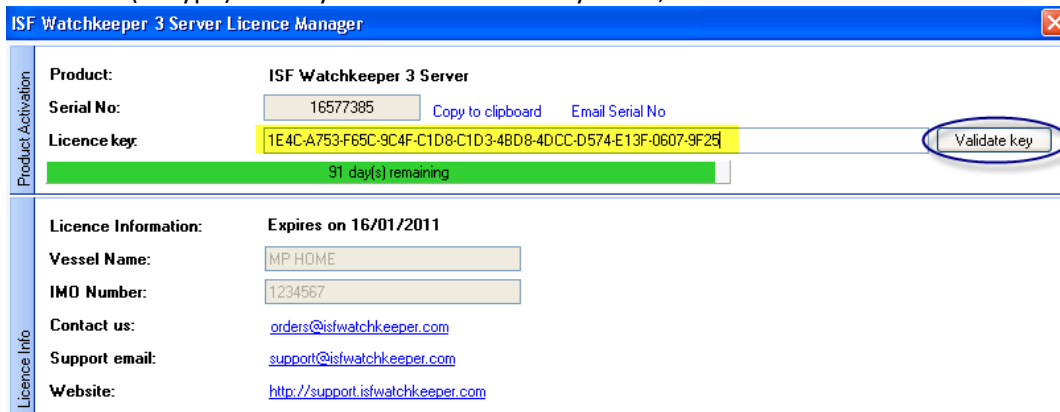
7. Click START->PROGRAMS->WATCHKEEPER 3 SERVER->WATCHKEEPER 3 MENUBAR. When the menubar appears, click ADMIN->LICENSE MANAGER



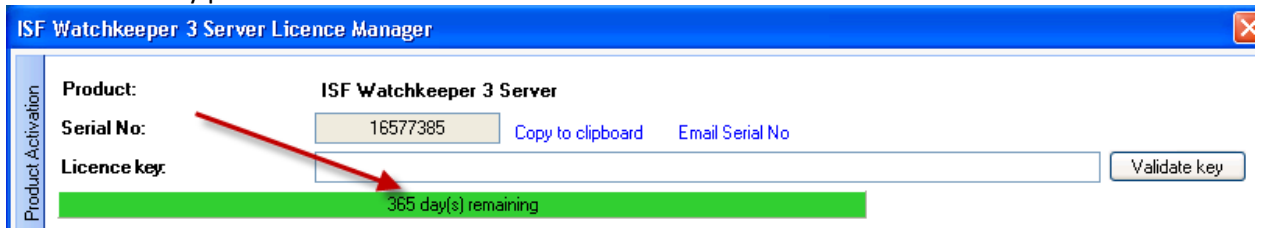
(If the license has already expired, click OK then the license manager will load automatically)

#### Inputting the “License Key”

1. You will receive an activation email from us containing your encoded “License Key”. Copy and Paste (or type) this key into the “License Key” field, and click VALIDATE KEY button:



2. The new validity period is show:



3. You are complete!
4. All your Watchkeeper Client installations will automatically be activated once the Server is activated.