



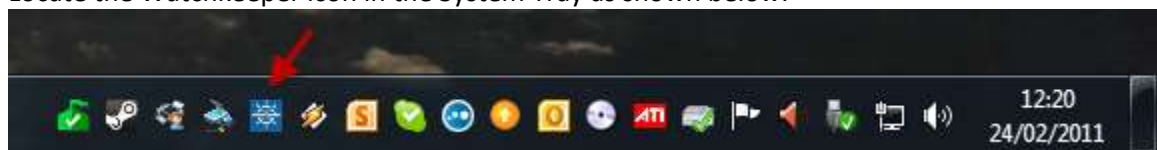
WK3 Network Version - How to reset the ADMIN password

Problem

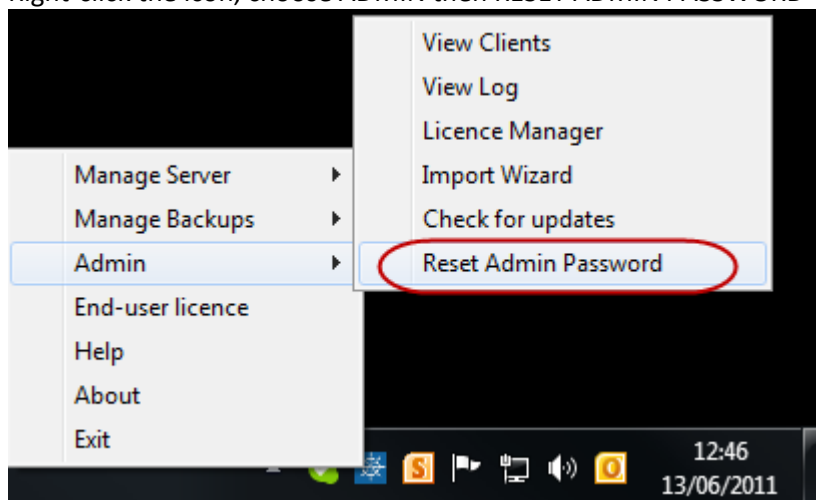
You try to LOGIN to Watchkeeper 3 with a username of "Admin" but you don't know the login password

Solution

1. Locate the computer running "Watchkeeper 3 Server"
2. Open Watchkeeper 3 Server Manager (START then PROGRAMS then WATCHKEEPER 3 SERVER then WATCHKEEPER 3 SERVER)
3. Locate the Watchkeeper icon in the System Tray as shown below:



- 4.
5. Right-click the icon, choose ADMIN then RESET ADMIN PASSWORD



- 6.
7. Follow the on-screen steps to enter a new password, or you can leave it blank to reset the password to blank