



How to input the ISF Watchkeeper 3 (Network Version) License Key

Inputting the "License Key"

After you have emailed the ISF with your Watchkeeper SERIAL NUMBER, they will respond on email with a LICENSE KEY. Please follow the steps below to input the LICENSE KEY and activate your subscription

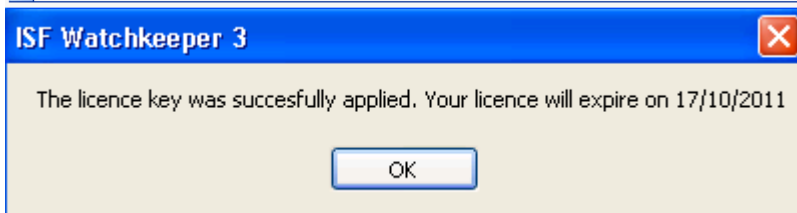
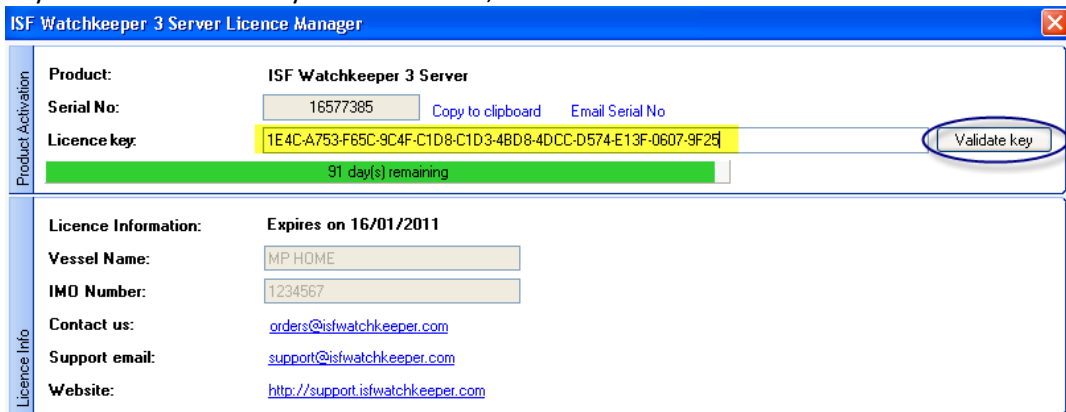
1. On the computer where Watchkeeper Server is installed, locate the Watchkeeper System Tray Applet (bottom right of the screen):



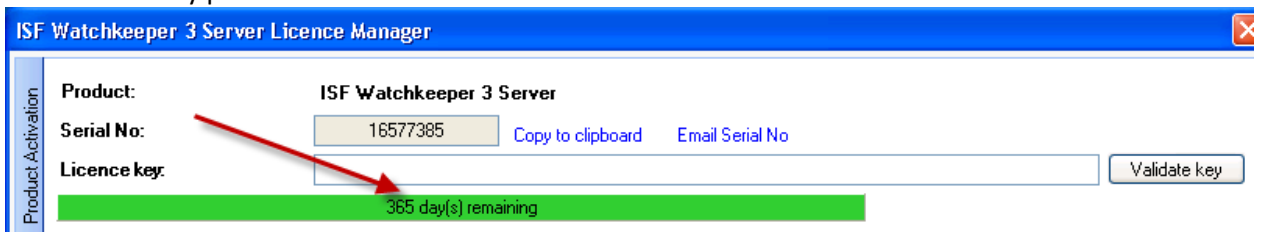
2. If the Applet icon is not shown as above, then click START then PROGRAMS then WATCHKEEPER 3 SERVER then WATCHKEEPER 3 SERVER



3. Right-click the Watchkeeper System Tray Applet, select ADMIN then LICENSE MANAGER
4. Locate the email from the ISF with your encoded "License Key". Copy and Paste (or type) this key into the "License Key" field as below, and click the VALIDATE KEY button:



5. The new validity period is show:



6. You are complete! All your Watchkeeper Client installations will automatically be activated once the Server is activated. Support@isfwatchkeeper.com